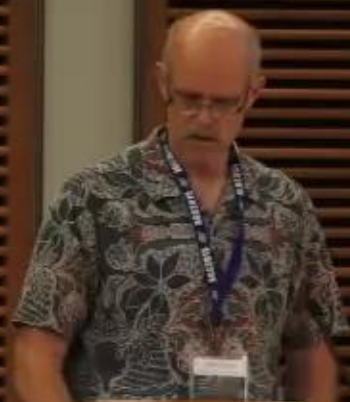
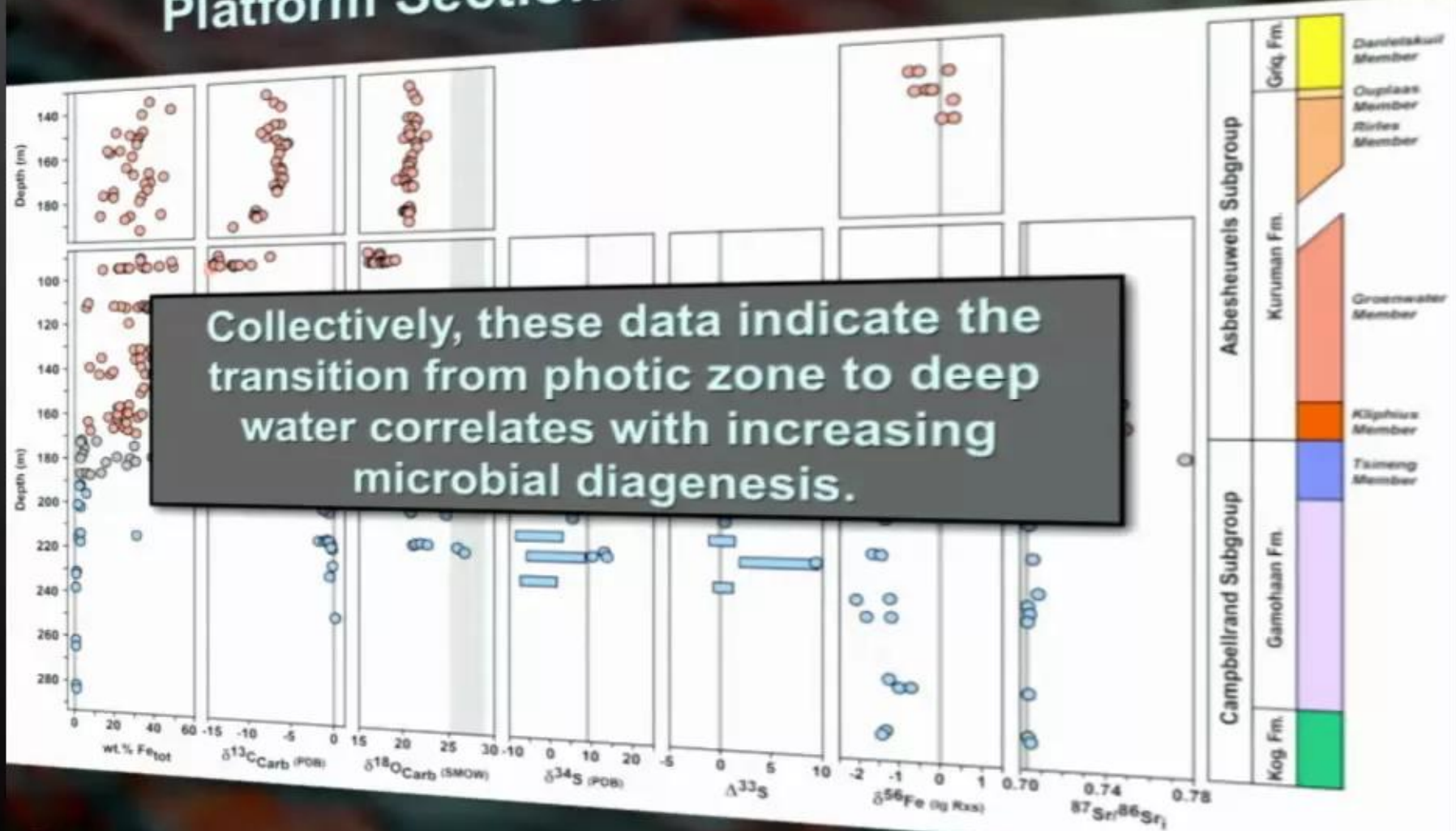


Platform Section: ~2550-2430 Ma



1
00:00:13,940 --> 00:00:09,830
so who here has ever had to give in a

2
00:00:16,760 --> 00:00:13,950
presentation a conference show of hands

3
00:00:19,760 --> 00:00:16,770
we should get yep good showing Hugh here

4
00:00:22,040 --> 00:00:19,770
has ever had to teach a class be a TA or

5
00:00:24,410 --> 00:00:22,050
write a broader impact section for a

6
00:00:27,080 --> 00:00:24,420
grant alright so we we know that

7
00:00:29,540 --> 00:00:27,090
communication is an important part of

8
00:00:31,299 --> 00:00:29,550
being a scientist and that's why we made

9
00:00:34,340 --> 00:00:31,309
it the theme of this year's conference

10
00:00:36,350 --> 00:00:34,350
communication on all levels so today we

11
00:00:39,110 --> 00:00:36,360
want to build skills for communicating

12
00:00:41,479 --> 00:00:39,120
to both a scientific audience and a non

13
00:00:44,720 --> 00:00:41,489

specialist audience and to help us with

14

00:00:48,650 --> 00:00:44,730

this we have two talks the first talk

15

00:00:50,959 --> 00:00:48,660

will be by Clark Johnson Clark is the P

16

00:00:52,369 --> 00:00:50,969

I for the Wisconsin astrobiology

17

00:00:55,250 --> 00:00:52,379

Research Consortium

18

00:00:57,740 --> 00:00:55,260

he's a Vilas distinguished professor and

19

00:01:00,380 --> 00:00:57,750

his most recent recognition in teaching

20

00:01:02,450 --> 00:01:00,390

was the annual excellence in Graduate

21

00:01:05,390 --> 00:01:02,460

teaching award for a seminar on

22

00:01:08,330 --> 00:01:05,400

scientific presentations Brooke will be

23

00:01:10,399 --> 00:01:08,340

our second speaker today Brooke Norton

24

00:01:12,260 --> 00:01:10,409

and she's going to be focusing on

25

00:01:14,240 --> 00:01:12,270

communicating to a non specialist

26

00:01:17,300 --> 00:01:14,250

audience Brooke is the assistant

27

00:01:19,969 --> 00:01:17,310

director of the uw-madison geology

28

00:01:23,929 --> 00:01:19,979

Museum and she is the head outreach

29

00:01:26,359 --> 00:01:23,939

specialist for this year's or this most

30

00:01:28,670 --> 00:01:26,369

recent canned cycle from the NAI for

31

00:01:33,679 --> 00:01:28,680

here at uw-madison so without further

32

00:01:41,810 --> 00:01:33,689

ado if oh well and just a second

33

00:01:44,749 --> 00:01:41,820

we'll pass it off to Clark yes so we're

34

00:01:47,120 --> 00:01:44,759

gonna head over to the Memorial Union

35

00:01:48,920 --> 00:01:47,130

Terrace and it's really important that

36

00:01:51,410 --> 00:01:48,930

everyone get there for five o'clock

37

00:01:52,700 --> 00:01:51,420

because there can be hundreds of people

38

00:01:54,429 --> 00:01:52,710

that come to these events so it's

39

00:01:56,990 --> 00:01:54,439

important that you have somewhere to sit

40

00:01:59,179 --> 00:01:57,000

please make sure that you wear either

41

00:02:02,630 --> 00:01:59,189

your t-shirt or the ask an

42

00:02:08,170 --> 00:02:02,640

astrobiologist button and it should be a

43

00:02:13,330 --> 00:02:10,570

it's in your program and it's listed as

44

00:02:16,570 --> 00:02:13,340

the movie nights so every Monday in

45

00:02:18,640 --> 00:02:16,580

Madison we have a film showing outside

46

00:02:21,280 --> 00:02:18,650

on the terrace out by the lakes you can

47

00:02:24,160 --> 00:02:21,290

get some beers and snacks and just eat

48

00:02:26,050 --> 00:02:24,170

outside so they're showing Wally this

49

00:02:29,070 --> 00:02:26,060

Monday and we're making a connection to

50

00:02:32,200 --> 00:02:29,080

the rover curiosity so saying you know

51
00:02:36,070 --> 00:02:32,210
there is more than one lonely Rover out

52
00:02:37,810 --> 00:02:36,080
there there's curiosity as well so we'll

53
00:02:39,970 --> 00:02:37,820
hope to see you there at five o'clock so

54
00:02:43,480 --> 00:02:39,980
I'll pass it off to Clark now I'll use

55
00:02:44,920 --> 00:02:43,490
this alright great well welcome good

56
00:02:49,210 --> 00:02:44,930
afternoon sounds like you're having a

57
00:02:52,060 --> 00:02:49,220
good meeting so far uh so Brandt asked

58
00:02:55,110 --> 00:02:52,070
me to just spend a few minutes going

59
00:02:58,900 --> 00:02:55,120
over some tips and tricks on

60
00:03:02,740 --> 00:02:58,910
presentations and posters I usually do a

61
00:03:05,380 --> 00:03:02,750
spring short seminar for for students

62
00:03:08,050 --> 00:03:05,390
because I think the more you present the

63
00:03:10,990 --> 00:03:08,060

better it is it takes a while to get

64

00:03:12,280 --> 00:03:11,000

over nerves things like that and so I'm

65

00:03:14,920 --> 00:03:12,290

going to talk a little bit about the

66

00:03:16,870 --> 00:03:14,930

mechanics of putting together your

67

00:03:18,009 --> 00:03:16,880

presentations and some things to look

68

00:03:22,390 --> 00:03:18,019

for and I'm going to talk a little bit

69

00:03:25,180 --> 00:03:22,400

about posters at the end so I've broken

70

00:03:28,229 --> 00:03:25,190

this up to a couple of parts and the

71

00:03:31,420 --> 00:03:28,239

first thing you want to remember is as

72

00:03:35,440 --> 00:03:31,430

humans were wired to recognize certain

73

00:03:38,920 --> 00:03:35,450

graphical components and your job is to

74

00:03:40,660 --> 00:03:38,930

not violate those so if you throw off

75

00:03:43,240 --> 00:03:40,670

something that people aren't used to

76

00:03:46,030 --> 00:03:43,250

seeing there's going to be a delay in

77

00:03:47,830 --> 00:03:46,040

comprehension of your slides every time

78

00:03:49,600 --> 00:03:47,840

you throw up a new slide everyone has a

79

00:03:51,670 --> 00:03:49,610

little disorientation it could be a few

80

00:03:54,250 --> 00:03:51,680

seconds could be 30 seconds depending on

81

00:03:56,380 --> 00:03:54,260

how complicated it is and yet you're

82

00:03:58,270 --> 00:03:56,390

trying to cram as much as you can in

83

00:04:01,720 --> 00:03:58,280

those 12 minutes right if you're doing a

84

00:04:03,220 --> 00:04:01,730

short normal talk so just a couple of

85

00:04:05,590 --> 00:04:03,230

nuts and bolts about controlling where

86

00:04:07,600 --> 00:04:05,600

your audience looks and so let's start

87

00:04:10,960 --> 00:04:07,610

with this one most people's eyes

88

00:04:13,479 --> 00:04:10,970

probably went to the left right and

89

00:04:16,440 --> 00:04:13,489

that's because we are hardwired for

90

00:04:19,159 --> 00:04:16,450

light and bright catches our attention

91

00:04:21,589 --> 00:04:19,169

so

92

00:04:24,110 --> 00:04:21,599

light color in the front dark color in

93

00:04:26,929 --> 00:04:24,120

the back you could make presentations

94

00:04:30,860 --> 00:04:26,939

like this but it's gonna throw people

95

00:04:34,309 --> 00:04:30,870

and your job is to not do that how about

96

00:04:36,589 --> 00:04:34,319

this one your eyes probably went to this

97

00:04:38,260 --> 00:04:36,599

lighter one because it's light and it's

98

00:04:41,719 --> 00:04:38,270

in front of this one because it's

99

00:04:45,770 --> 00:04:41,729

blurred right far away not as sharp as

100

00:04:48,260 --> 00:04:45,780

up close keep that in mind so drop

101
00:04:49,820 --> 00:04:48,270
shadows I'm a big fan of drop shadows

102
00:04:55,879 --> 00:04:49,830
but there's some here that don't work so

103
00:04:58,550 --> 00:04:55,889
well right this one kind of has a shadow

104
00:05:00,830 --> 00:04:58,560
behind it this one has a shadow that's

105
00:05:03,110 --> 00:05:00,840
inverted right the shadows lighter than

106
00:05:07,249 --> 00:05:03,120
the front most of you probably like this

107
00:05:09,800 --> 00:05:07,259
one right so keep that in mind keep what

108
00:05:11,420 --> 00:05:09,810
we're hardwired to do you don't want to

109
00:05:14,540 --> 00:05:11,430
violate in a 12 minute talk otherwise

110
00:05:17,119 --> 00:05:14,550
you're really gonna slow down okay how

111
00:05:18,559 --> 00:05:17,129
about this one relative placement now

112
00:05:21,860 --> 00:05:18,569
not everybody works this way take a

113
00:05:24,019 --> 00:05:21,870

little poll sometimes but most people

114

00:05:27,230 --> 00:05:24,029

kind of prefer the one in the left

115

00:05:29,779 --> 00:05:27,240

because it is a reddish warmer color in

116

00:05:31,909 --> 00:05:29,789

front of a cooler one right red is

117

00:05:34,010 --> 00:05:31,919

attention although you could over blow

118

00:05:35,800 --> 00:05:34,020

it right if I made this fully saturated

119

00:05:40,550 --> 00:05:35,810

red your eyes would start to go crazy

120

00:05:42,860 --> 00:05:40,560

okay so cool colors behind warm colors

121

00:05:44,180 --> 00:05:42,870

in front but don't crank the saturation

122

00:05:45,339 --> 00:05:44,190

all the way up because that's a little

123

00:05:47,510 --> 00:05:45,349

bit too query

124

00:05:49,700 --> 00:05:47,520

okay so just some of those nuts and

125

00:05:51,980 --> 00:05:49,710

bolts another thing that I like to tell

126

00:05:54,170 --> 00:05:51,990

students is make your own theme yeah we

127

00:05:56,329 --> 00:05:54,180

can use these that I have no idea who

128

00:05:58,909 --> 00:05:56,339

built those they're for some business

129

00:06:01,010 --> 00:05:58,919

group or whatever and you can get all

130

00:06:03,769 --> 00:06:01,020

these little things don't do those make

131

00:06:06,980 --> 00:06:03,779

your own style and what do you start

132

00:06:08,510 --> 00:06:06,990

with a background and some of you may

133

00:06:11,899 --> 00:06:08,520

know what this kind of is this is a

134

00:06:13,730 --> 00:06:11,909

crossed pollard image of a pretty tight

135

00:06:15,079 --> 00:06:13,740

so it has very high colors if you're not

136

00:06:17,059 --> 00:06:15,089

a geologist you know what that means

137

00:06:18,619 --> 00:06:17,069

don't worry about it so I could use that

138

00:06:20,719 --> 00:06:18,629

it's kind of a cool background and I

139

00:06:25,360 --> 00:06:20,729

slap some white to color text on there

140

00:06:28,820 --> 00:06:25,370

it's a little bit hard to read blur it

141

00:06:30,589 --> 00:06:28,830

Photoshop blur is your friend in making

142

00:06:32,330 --> 00:06:30,599

a nice background and keep that

143

00:06:34,340 --> 00:06:32,340

background through everything

144

00:06:36,140 --> 00:06:34,350

but we can play around with it we could

145

00:06:40,310 --> 00:06:36,150

maybe change the coloring here a little

146

00:06:42,590 --> 00:06:40,320

bit I can make it darker and I could

147

00:06:46,040 --> 00:06:42,600

skew it in the hue to something cooler

148

00:06:49,520 --> 00:06:46,050

why because cool is behind and that sets

149

00:06:51,379 --> 00:06:49,530

off my lighter colored more warmer text

150

00:06:53,570 --> 00:06:51,389

and then I can start using two different

151

00:06:55,010 --> 00:06:53,580

colors but not going crazy with the

152

00:06:57,620 --> 00:06:55,020

fonts right just because you have 500

153

00:06:59,930 --> 00:06:57,630

fonts on the computer it doesn't mean

154

00:07:04,219 --> 00:06:59,940

you need to use them all one or two

155

00:07:06,409 --> 00:07:04,229

fonts is the graphical standard not

156

00:07:08,240 --> 00:07:06,419

everything so those are the two same two

157

00:07:11,690 --> 00:07:08,250

fonts just slightly different colors and

158

00:07:13,969 --> 00:07:11,700

sizes another thing that I like to tell

159

00:07:15,860 --> 00:07:13,979

students to do is put your

160

00:07:19,219 --> 00:07:15,870

acknowledgments and collaborators up

161

00:07:23,510 --> 00:07:19,229

front most people put them at the end

162

00:07:24,890 --> 00:07:23,520

right it's my in slide that's probably

163

00:07:27,740 --> 00:07:24,900

not the thing you want people to

164

00:07:29,600 --> 00:07:27,750

remember right the last slide should not

165

00:07:32,060 --> 00:07:29,610

be your acknowledgments at least in my

166

00:07:33,290 --> 00:07:32,070

opinion get it all up front out of the

167

00:07:34,760 --> 00:07:33,300

way whoever gave you all the money

168

00:07:36,500 --> 00:07:34,770

that's fine everybody will know what

169

00:07:38,719 --> 00:07:36,510

this means right everyone's gonna know

170

00:07:40,100 --> 00:07:38,729

that NASA gave you money and NSF gave

171

00:07:41,420 --> 00:07:40,110

you money if they put their logo on the

172

00:07:43,250 --> 00:07:41,430

front and then you're done with it and

173

00:07:46,779 --> 00:07:43,260

then the last slide can be what you want

174

00:07:49,430 --> 00:07:46,789

them to leave the room thinking about

175

00:07:52,219 --> 00:07:49,440

okay stepping through material this is

176

00:07:56,529 --> 00:07:52,229

really important the worst thing to do

177

00:07:58,520 --> 00:07:56,539

is to grab images from printed media

178

00:08:01,370 --> 00:07:58,530

right they're all black and white

179

00:08:03,830 --> 00:08:01,380

although not always these days but it's

180

00:08:05,629 --> 00:08:03,840

all a ton of material the goals of print

181

00:08:08,779 --> 00:08:05,639

media are completely different than a

182

00:08:10,760 --> 00:08:08,789

talk print media can be dense you can

183

00:08:13,159 --> 00:08:10,770

look at it for a long time not in a talk

184

00:08:14,690 --> 00:08:13,169

so how do you deal with that well how

185

00:08:18,050 --> 00:08:14,700

about an outline outlines are always

186

00:08:20,540 --> 00:08:18,060

good I see this a lot boom put it all up

187

00:08:24,740 --> 00:08:20,550

there and you just kind of use the

188

00:08:27,950 --> 00:08:24,750

default spacing please at least indent

189

00:08:30,020 --> 00:08:27,960

them make it cleaner give clear visual

190

00:08:31,310 --> 00:08:30,030

guidelines now you know that these are

191

00:08:32,930 --> 00:08:31,320

the bullets and those are the points

192

00:08:35,600 --> 00:08:32,940

start but that's an awful lot of

193

00:08:38,990 --> 00:08:35,610

material at one time right so step

194

00:08:41,420 --> 00:08:39,000

through it you can step through rather

195

00:08:44,420 --> 00:08:41,430

quickly and then look what I've done

196

00:08:46,070 --> 00:08:44,430

I've actually grade this out now I

197

00:08:48,740 --> 00:08:46,080

haven't used some kind of

198

00:08:51,350 --> 00:08:48,750

see effect I've actually made separate

199

00:08:52,970 --> 00:08:51,360

slides because then I know when that is

200

00:08:55,730 --> 00:08:52,980

uploaded to the server at whatever

201
00:08:56,120 --> 00:08:55,740
meeting it's less likely to get messed

202
00:08:59,840 --> 00:08:56,130
up

203
00:09:01,580 --> 00:08:59,850
don't use effects do it individually and

204
00:09:02,870 --> 00:09:01,590
these are and so what if you have a

205
00:09:04,310 --> 00:09:02,880
hundred slides because you have a whole

206
00:09:07,430 --> 00:09:04,320
bunch of transitions that you made a

207
00:09:10,280 --> 00:09:07,440
manually in between that's the safer way

208
00:09:12,230 --> 00:09:10,290
to do it so why did I leave this text up

209
00:09:14,870 --> 00:09:12,240
here but I graded I didn't want to

210
00:09:16,790 --> 00:09:14,880
disorient you I wanted to give you a

211
00:09:18,500 --> 00:09:16,800
reference frame and your brain is always

212
00:09:20,720 --> 00:09:18,510
looking for a reference frame I've got a

213
00:09:23,200 --> 00:09:20,730

starting point and an anchor and then

214

00:09:27,140 --> 00:09:23,210

you build but you want to keep the focus

215

00:09:32,180 --> 00:09:27,150

so it's easier to keep the focus and

216

00:09:34,030 --> 00:09:32,190

then let people see what they saw as a

217

00:09:37,300 --> 00:09:34,040

reference point

218

00:09:40,280 --> 00:09:37,310

how about diagrams with lots of figures

219

00:09:41,810 --> 00:09:40,290

figures are tough so here's a figure

220

00:09:43,760 --> 00:09:41,820

this is on ultra high pressure

221

00:09:45,530 --> 00:09:43,770

metamorphism subject kind of far from

222

00:09:47,870 --> 00:09:45,540

this group but that's okay

223

00:09:50,180 --> 00:09:47,880

there's a lot of data in here it's all

224

00:09:52,900 --> 00:09:50,190

shown up there and a lot of text and I

225

00:09:56,120 --> 00:09:52,910

could step through and I could do this

226

00:09:58,850 --> 00:09:56,130

but it's not gonna be quite as easily as

227

00:10:01,040 --> 00:09:58,860

if I remake the figure with all the

228

00:10:03,080 --> 00:10:01,050

points on there and then I progressively

229

00:10:05,720 --> 00:10:03,090

strip them off I make different versions

230

00:10:08,060 --> 00:10:05,730

of the TIFF files okay so let's try it

231

00:10:09,950 --> 00:10:08,070

with a different way let's just say okay

232

00:10:11,690 --> 00:10:09,960

I've got some purple data here and I'm

233

00:10:13,100 --> 00:10:11,700

gonna put a little purple text and I got

234

00:10:14,990 --> 00:10:13,110

some little green data I'm gonna put a

235

00:10:16,760 --> 00:10:15,000

little more green text and I'm gonna

236

00:10:18,980 --> 00:10:16,770

step through and then I'm gonna say ah

237

00:10:21,470 --> 00:10:18,990

but now we have lutetium hafnium data

238

00:10:23,270 --> 00:10:21,480

that's these guys and then I'm gonna say

239

00:10:25,250 --> 00:10:23,280

ah but we have some errors for the

240

00:10:27,770 --> 00:10:25,260

initiation of garnet growth slightly

241

00:10:30,170 --> 00:10:27,780

different color these guys and then I

242

00:10:32,810 --> 00:10:30,180

can add it to another point and I can

243

00:10:37,070 --> 00:10:32,820

add in some other bars and talk about

244

00:10:40,580 --> 00:10:37,080

tectonic implications and move along in

245

00:10:42,800 --> 00:10:40,590

a much clearer way I can get through

246

00:10:44,960 --> 00:10:42,810

that data rich slide it takes a little

247

00:10:47,150 --> 00:10:44,970

more time to make four or five different

248

00:10:49,430 --> 00:10:47,160

versions in Photoshop or whatever you

249

00:10:52,220 --> 00:10:49,440

use and strip out the other versions and

250

00:10:54,320 --> 00:10:52,230

save them and then I layer them not as

251
00:10:56,360 --> 00:10:54,330
animations but I just layer them as

252
00:10:58,890 --> 00:10:56,370
different slides and then they will

253
00:11:00,510 --> 00:10:58,900
transport across lots of platforms

254
00:11:02,760 --> 00:11:00,520
and might gives thumbs up with you

255
00:11:05,940 --> 00:11:02,770
here's about lots of platforms back

256
00:11:08,340 --> 00:11:05,950
there because believe you me there's

257
00:11:10,380 --> 00:11:08,350
nothing worse than seeing your cherished

258
00:11:12,450 --> 00:11:10,390
presentation get butchered by some

259
00:11:12,960 --> 00:11:12,460
server or something like that keep it

260
00:11:18,030 --> 00:11:12,970
simple

261
00:11:21,860 --> 00:11:18,040
one a little bit more germane to this

262
00:11:25,320 --> 00:11:21,870
group this is a series of late Archaean

263
00:11:26,970 --> 00:11:25,330

sedimentary sequences from South Africa

264

00:11:30,330 --> 00:11:26,980

and then yeah there's a lot on here

265

00:11:33,660 --> 00:11:30,340

right you may want to impress everybody

266

00:11:35,400 --> 00:11:33,670

with a lot of data and then say hey

267

00:11:36,840 --> 00:11:35,410

we're going to look at all this and so

268

00:11:38,190 --> 00:11:36,850

you may want to show it to them all and

269

00:11:41,280 --> 00:11:38,200

say ah don't worry we're gonna work

270

00:11:43,560 --> 00:11:41,290

through it and so you could put a little

271

00:11:45,120 --> 00:11:43,570

transparent boundary over there or a

272

00:11:46,890 --> 00:11:45,130

little slide over here okay I'm not

273

00:11:49,080 --> 00:11:46,900

going to go to that yet now I got to put

274

00:11:51,180 --> 00:11:49,090

a red mark around here and then I can

275

00:11:54,570 --> 00:11:51,190

use that extra space to put a point

276

00:11:57,060 --> 00:11:54,580

there it's important that you realize

277

00:12:01,440 --> 00:11:57,070

that everyone can read faster than you

278

00:12:04,050 --> 00:12:01,450

can speak so try not to read your points

279

00:12:05,820 --> 00:12:04,060

keep them short and just say we're just

280

00:12:07,470 --> 00:12:05,830

gonna go through a transition here that

281

00:12:09,360 --> 00:12:07,480

the iron goes down and the carbon

282

00:12:11,100 --> 00:12:09,370

isotopes change and you don't have to

283

00:12:14,130 --> 00:12:11,110

say every word on there because everyone

284

00:12:15,690 --> 00:12:14,140

can read faster than you can speak but

285

00:12:17,580 --> 00:12:15,700

you can step through now we're gonna add

286

00:12:19,740 --> 00:12:17,590

a little bit of carbon isotope data or

287

00:12:21,600 --> 00:12:19,750

oxygen isotope data and you can say

288

00:12:24,120 --> 00:12:21,610

there's another transition or change in

289

00:12:25,590 --> 00:12:24,130

Delta o-18 values you can say okay now

290

00:12:27,870 --> 00:12:25,600

we're gonna talk about some sulfur

291

00:12:31,500 --> 00:12:27,880

isotope data and then you can plop up

292

00:12:33,570 --> 00:12:31,510

another little guy up here and then you

293

00:12:35,280 --> 00:12:33,580

can add some more data another

294

00:12:37,590 --> 00:12:35,290

transition now we're talking about some

295

00:12:40,350 --> 00:12:37,600

iron isotope data and finally we've got

296

00:12:41,820 --> 00:12:40,360

some strontium isotope data and then you

297

00:12:47,490 --> 00:12:41,830

can leave everything up and start

298

00:12:51,570 --> 00:12:47,500

putting some bulleted things and you can

299

00:12:56,790 --> 00:12:51,580

continue that and then you can basically

300

00:12:58,680 --> 00:12:56,800

conclude okay so you can step through a

301

00:13:01,560 --> 00:12:58,690

lot but you have to break it out into

302

00:13:04,770 --> 00:13:01,570

chunks and you don't want to change all

303

00:13:07,050 --> 00:13:04,780

of the graphical input in other words

304

00:13:09,060 --> 00:13:07,060

the background state on the same so your

305

00:13:09,990 --> 00:13:09,070

eye when you saw each change that okay

306

00:13:10,300 --> 00:13:10,000

it's the same I don't have to worry

307

00:13:11,590 --> 00:13:10,310

about

308

00:13:13,150 --> 00:13:11,600

okay that's same I'll have to worry

309

00:13:14,710 --> 00:13:13,160

about that that's how your brain is

310

00:13:17,710 --> 00:13:14,720

thinking so those those kind of

311

00:13:19,420 --> 00:13:17,720

transitions and little helps can allow

312

00:13:21,699 --> 00:13:19,430

you to force a lot of material into a

313

00:13:24,429 --> 00:13:21,709

short talk but still get allow people to

314

00:13:27,639 --> 00:13:24,439

get something out of okay how about a

315

00:13:29,410 --> 00:13:27,649

very long talk if you give a very long

316

00:13:32,650 --> 00:13:29,420

talk you may want to break it out into

317

00:13:34,720 --> 00:13:32,660

color-coded sections so here's a long

318

00:13:36,790 --> 00:13:34,730

this is this is kind of an abstract of a

319

00:13:42,369 --> 00:13:36,800

of an hour-long talk and it's got three

320

00:13:44,679 --> 00:13:42,379

points I chose my orientation side that

321

00:13:46,150 --> 00:13:44,689

I cut coming back to in this one I kind

322

00:13:47,829 --> 00:13:46,160

of made it neutral in the background

323

00:13:50,319 --> 00:13:47,839

because I want to focus everything that

324

00:13:52,329 --> 00:13:50,329

is yellow green or blue

325

00:13:54,759 --> 00:13:52,339

so here might be something in the early

326

00:13:56,290 --> 00:13:54,769

sections and then I come back and I say

327

00:13:58,629 --> 00:13:56,300

now we're gonna talk about these bio

328

00:14:00,819 --> 00:13:58,639

signature things and then we might have

329

00:14:02,559 --> 00:14:00,829

a lot of green backgrounds for example

330

00:14:05,259 --> 00:14:02,569

and then I always come back to the exact

331

00:14:08,049 --> 00:14:05,269

same slide you recognize it and now we

332

00:14:10,269 --> 00:14:08,059

have some ancient rock record stuff so

333

00:14:15,369 --> 00:14:10,279

there are ways your goal is to keep your

334

00:14:17,199 --> 00:14:15,379

audience oriented okay the last few

335

00:14:18,809 --> 00:14:17,209

seconds and we have time probably to

336

00:14:20,710 --> 00:14:18,819

just chat a little bit afterwards

337

00:14:24,579 --> 00:14:20,720

because I wanted to give time for

338

00:14:28,030 --> 00:14:24,589

discussion let's talk about posters so

339

00:14:29,980 --> 00:14:28,040

posters a little bit different a talk

340

00:14:33,280 --> 00:14:29,990

the person's decided to come to your

341

00:14:35,079 --> 00:14:33,290

talk you've got them your goal is to

342

00:14:37,569 --> 00:14:35,089

make sure they understand something when

343

00:14:39,610 --> 00:14:37,579

they leave the poster is different

344

00:14:42,429 --> 00:14:39,620

you've got to capture somebody's

345

00:14:43,929 --> 00:14:42,439

attention out of all the other posters

346

00:14:47,199 --> 00:14:43,939

and you've all been to meetings I'm sure

347

00:14:49,030 --> 00:14:47,209

where there's hundreds of posters so how

348

00:14:56,069 --> 00:14:49,040

do you capture someone's attention and

349

00:15:01,929 --> 00:15:00,400

okay so I just showed a few examples of

350

00:15:04,329 --> 00:15:01,939

posters that have just happened to be

351
00:15:06,489 --> 00:15:04,339
hanging around week's hall and what are

352
00:15:08,379 --> 00:15:06,499
the essential things well if I'm looking

353
00:15:10,329 --> 00:15:08,389
for a poster I've got to find the title

354
00:15:12,189 --> 00:15:10,339
and the names of the places right you

355
00:15:15,460 --> 00:15:12,199
know it might be by the author or it

356
00:15:17,829 --> 00:15:15,470
might have a poster number so this isn't

357
00:15:21,480 --> 00:15:17,839
too bad this has got a big title and I

358
00:15:25,980 --> 00:15:21,490
can read those other people's names

359
00:15:29,660 --> 00:15:25,990
ah it's pretty good in terms of myself

360
00:15:32,690 --> 00:15:29,670
around it doesn't have any conclusions

361
00:15:34,530 --> 00:15:32,700
always say what your conclusions are and

362
00:15:37,650 --> 00:15:34,540
where you want to go next

363
00:15:41,970 --> 00:15:37,660

that's important it does have the

364

00:15:44,370 --> 00:15:41,980

abstract oh I see that a lot and I think

365

00:15:46,139 --> 00:15:44,380

people put the abstract on the poster

366

00:15:47,160 --> 00:15:46,149

because when you're making it on the

367

00:15:48,960 --> 00:15:47,170

computer screen

368

00:15:51,150 --> 00:15:48,970

you feel like you did something right

369

00:15:52,920 --> 00:15:51,160

you took from the you took the word file

370

00:15:54,120 --> 00:15:52,930

that just submitted the abstract and oh

371

00:15:57,000 --> 00:15:54,130

I'm gonna cut and paste on putting the

372

00:16:00,060 --> 00:15:57,010

abstract I've started cool it's a waste

373

00:16:02,550 --> 00:16:00,070

of space right it's very common thing to

374

00:16:05,130 --> 00:16:02,560

do but in general it's either in the

375

00:16:07,949 --> 00:16:05,140

program someone's found it by looking at

376

00:16:09,449 --> 00:16:07,959

it I discourage people from putting in

377

00:16:12,150 --> 00:16:09,459

abstracts what I would have rather seen

378

00:16:14,430 --> 00:16:12,160

as no abstract but some future

379

00:16:15,780 --> 00:16:14,440

directions you know this one I just kind

380

00:16:19,769 --> 00:16:15,790

of end with some plot and it's kind of

381

00:16:26,820 --> 00:16:19,779

like oh okay now what uh here's another

382

00:16:29,699 --> 00:16:26,830

one I can read the title by looking if

383

00:16:32,130 --> 00:16:29,709

the program is oriented by author I

384

00:16:34,019 --> 00:16:32,140

gotta be able to see y'all got the app

385

00:16:35,420 --> 00:16:34,029

set of course everybody likes do the

386

00:16:38,190 --> 00:16:35,430

abstract

387

00:16:40,680 --> 00:16:38,200

how about flow well this one's pretty

388

00:16:42,000 --> 00:16:40,690

clear right I go down over you don't

389

00:16:43,530 --> 00:16:42,010

have to reading this so my point is just

390

00:16:45,660 --> 00:16:43,540

look at the graphics another down up

391

00:16:46,470 --> 00:16:45,670

okay whoo boy that's a lot he'll come

392

00:17:13,040 --> 00:16:46,480

down too

393

00:17:17,160 --> 00:17:16,020

your audience clear directions don't

394

00:17:20,520 --> 00:17:17,170

where to go yes

395

00:17:23,100 --> 00:17:20,530

Roman numerals or numbers with boxes of

396

00:17:24,569 --> 00:17:23,110

slightly different colors great don't

397

00:17:27,329 --> 00:17:24,579

make them try to figure it out and

398

00:17:29,720 --> 00:17:27,339

there's no conclusion no discussion

399

00:17:35,299 --> 00:17:29,730

there future directions

400

00:17:37,250 --> 00:17:35,309

how about this one okay yeah I can see

401
00:17:39,350 --> 00:17:37,260
that hello I can't see the people's

402
00:17:41,539 --> 00:17:39,360
names that's gonna be tough look at how

403
00:17:44,060 --> 00:17:41,549
much real estate is on the abstract when

404
00:17:45,490 --> 00:17:44,070
at the expense of the names look for

405
00:17:48,350 --> 00:17:45,500
something that's balanced

406
00:17:54,560 --> 00:17:48,360
how about flow okay I'm gonna start at

407
00:17:56,659 --> 00:17:54,570
the abstract there some people want to

408
00:17:59,630 --> 00:17:56,669
go write down others will want to go

409
00:18:01,610 --> 00:17:59,640
that way if I go over that way oh now

410
00:18:02,690 --> 00:18:01,620
what do I do I go down to this level or

411
00:18:05,510 --> 00:18:02,700
gonna go over there

412
00:18:08,960 --> 00:18:05,520
oh I'm confused I don't know how to read

413
00:18:10,490 --> 00:18:08,970

through it okay so the number one thing

414

00:18:14,360 --> 00:18:10,500

that I would suggest to you about

415

00:18:18,289 --> 00:18:14,370

posters is it is the opposite of what

416

00:18:22,549 --> 00:18:18,299

you think they are content is last not

417

00:18:24,409 --> 00:18:22,559

first your goal is to capture new people

418

00:18:28,100 --> 00:18:24,419

that could just as easily keep walking

419

00:18:30,740 --> 00:18:28,110

by and you want them to stop so start

420

00:18:33,140 --> 00:18:30,750

with the graphical elements and add the

421

00:18:35,510 --> 00:18:33,150

content later rather than starting with

422

00:18:38,000 --> 00:18:35,520

the content okay which is how most

423

00:18:41,210 --> 00:18:38,010

people do and the basic divisions are

424

00:18:43,460 --> 00:18:41,220

just shown here title area make sure the

425

00:18:45,680 --> 00:18:43,470

title your names if there's like a

426

00:18:47,810 --> 00:18:45,690

poster ID number some meetings do that

427

00:18:50,090 --> 00:18:47,820

make sure that's absolutely clear put

428

00:18:51,770 --> 00:18:50,100

your acknowledgments who funded you just

429

00:18:53,270 --> 00:18:51,780

put the little you know symbols things

430

00:18:55,400 --> 00:18:53,280

like that you don't have to go into gory

431

00:18:57,799 --> 00:18:55,410

detail that can all go up here and then

432

00:19:00,080 --> 00:18:57,809

the bulk of the poster goes there start

433

00:19:01,760 --> 00:19:00,090

with a template in Illustrator or

434

00:19:04,430 --> 00:19:01,770

whatever you like make the template and

435

00:19:06,770 --> 00:19:04,440

you brutally stick to it make the

436

00:19:10,130 --> 00:19:06,780

graphics first so here would be those

437

00:19:12,680 --> 00:19:10,140

components right titles most important

438

00:19:15,530 --> 00:19:12,690

use some drop shadow set it aside with

439

00:19:17,840 --> 00:19:15,540

some colors don't use things to garishly

440

00:19:20,539 --> 00:19:17,850

and then here's a simple template it's

441

00:19:23,150 --> 00:19:20,549

in kind of a vertical and left-to-right

442

00:19:25,760 --> 00:19:23,160

so you start here you work down this is

443

00:19:27,860 --> 00:19:25,770

all blue got a big line there this is

444

00:19:32,720 --> 00:19:27,870

all green and then this is kind of

445

00:19:35,480 --> 00:19:32,730

purple so add it all in your

446

00:19:37,460 --> 00:19:35,490

affiliations the names I can see that

447

00:19:39,380 --> 00:19:37,470

that's separately the title and yeah you

448

00:19:42,560 --> 00:19:39,390

could put funding and acknowledgments

449

00:19:43,500 --> 00:19:42,570

over there if you wanted then start

450

00:19:45,660 --> 00:19:43,510

adding

451
00:19:47,400 --> 00:19:45,670
ah this one I always ask my students to

452
00:19:50,940 --> 00:19:47,410
do tell me why you did the study

453
00:19:52,950 --> 00:19:50,950
motivation and research much more useful

454
00:19:55,800 --> 00:19:52,960
than an abstract that's already

455
00:19:58,410 --> 00:19:55,810
published somewhere else then put some

456
00:20:01,320 --> 00:19:58,420
background right okay where am I going

457
00:20:05,400 --> 00:20:01,330
what am I looking at put in some new

458
00:20:10,050 --> 00:20:05,410
results some data clearly label the

459
00:20:12,840 --> 00:20:10,060
figures and then some model some

460
00:20:15,870 --> 00:20:12,850
implications and then future directions

461
00:20:17,430 --> 00:20:15,880
where do you want to go everyone knows

462
00:20:19,950 --> 00:20:17,440
that you guys are students and early

463
00:20:22,920 --> 00:20:19,960

career people your goal is to interact

464

00:20:24,630 --> 00:20:22,930

with people give something for someone

465

00:20:29,940 --> 00:20:24,640

to talk about or maybe suggest something

466

00:20:32,820 --> 00:20:29,950

make some connections okay so in a brief

467

00:20:34,650 --> 00:20:32,830

kind of quick overview there I hope that

468

00:20:37,380 --> 00:20:34,660

gives you a few little pointers on both

469

00:20:40,650 --> 00:20:37,390

the talks and what you might do for

470

00:20:49,050 --> 00:20:40,660

posters and happy to have a little

471

00:20:58,790 --> 00:20:49,060

discussion if you want that's fantastic

472

00:21:04,800 --> 00:21:02,520

thanks that was really helpful what is

473

00:21:07,290 --> 00:21:04,810

your opinion about the amount of text in

474

00:21:09,870 --> 00:21:07,300

posters there are long conflicting views

475

00:21:12,540 --> 00:21:09,880

many people say the best poster is the

476

00:21:16,050 --> 00:21:12,550

one with the least amount of text but

477

00:21:18,900 --> 00:21:16,060

that may not be you may not be able to

478

00:21:20,820 --> 00:21:18,910

convey your message so what's what are

479

00:21:22,710 --> 00:21:20,830

your thoughts on a knot so I left out a

480

00:21:24,420 --> 00:21:22,720

slide that I sometimes given the big

481

00:21:27,750 --> 00:21:24,430

title that says I did not come here to

482

00:21:31,710 --> 00:21:27,760

read a novel and so that'll tell you my

483

00:21:34,590 --> 00:21:31,720

bias which is minimal text and if I see

484

00:21:36,330 --> 00:21:34,600

something and I and it's a bunch of text

485

00:21:37,590 --> 00:21:36,340

it could be the coolest thing I wanted

486

00:21:40,260 --> 00:21:37,600

to see I'll keep walking

487

00:21:42,510 --> 00:21:40,270

that's me personally but that's why you

488

00:21:45,780 --> 00:21:42,520

were there at the poster session to talk

489

00:21:48,570 --> 00:21:45,790

with people so again you're competing in

490

00:21:54,169 --> 00:21:48,580

a big meeting with a lot of stuff and so

491

00:22:03,379 --> 00:22:00,799

all right four slides I know some people

492

00:22:06,950 --> 00:22:03,389

that are very very adamant about black

493

00:22:10,310 --> 00:22:06,960

on white because it's more readable is

494

00:22:11,299 --> 00:22:10,320

that true and is that a bigger factor

495

00:22:14,299 --> 00:22:11,309

than the eye-catching

496

00:22:17,779 --> 00:22:14,309

miss well i started with this title

497

00:22:19,190 --> 00:22:17,789

slide as a as a on purpose because i

498

00:22:23,869 --> 00:22:19,200

thought it was rather bland

499

00:22:26,029 --> 00:22:23,879

it was pretty readable my own personal

500

00:22:29,450 --> 00:22:26,039

opinion is I liked the colored ones with

501
00:22:32,239 --> 00:22:29,460
some nice colors I think that is more

502
00:22:36,999 --> 00:22:32,249
memorable but sure this is the basics if

503
00:22:45,680 --> 00:22:43,279
okay actually a comment I've seen

504
00:22:47,539 --> 00:22:45,690
someone so I heard once that like yellow

505
00:22:50,389 --> 00:22:47,549
text on blue background looks the best

506
00:22:52,580 --> 00:22:50,399
and I was at a talk recently where

507
00:22:55,369 --> 00:22:52,590
someone did that and it was so hard to

508
00:22:57,470 --> 00:22:55,379
read like I know that like if it's right

509
00:23:03,560 --> 00:22:57,480
yellow on the bright blue kind of like

510
00:23:05,720 --> 00:23:03,570
the it was it was really hard to read

511
00:23:08,859 --> 00:23:05,730
and so it didn't look so good I know

512
00:23:11,509 --> 00:23:08,869
that like you can kind of make that work

513
00:23:14,600 --> 00:23:11,519

but but that was that was pretty bad I'd

514

00:23:16,190 --> 00:23:14,610

also like to mention font size yeah I

515

00:23:18,619 --> 00:23:16,200

don't know if you have specifics on font

516

00:23:20,889 --> 00:23:18,629

size but in general I've noticed that

517

00:23:25,639 --> 00:23:20,899

when I can't read whether it's on a

518

00:23:27,230 --> 00:23:25,649

PowerPoint or like a talk or if it's on

519

00:23:30,499 --> 00:23:27,240

a poster you know I'll try clean my

520

00:23:34,249 --> 00:23:30,509

glasses once but you know if I still

521

00:23:37,159 --> 00:23:34,259

can't read then I won't even bother

522

00:23:40,159 --> 00:23:37,169

trying cuz it hurts so these are all big

523

00:23:43,190 --> 00:23:40,169

fonts and you have a choice in

524

00:23:46,009 --> 00:23:43,200

typography of using serif or sans serif

525

00:23:50,330 --> 00:23:46,019

sans serif means you don't have all the

526

00:23:54,499 --> 00:23:50,340

little don't use the cutesies use very

527

00:23:56,570 --> 00:23:54,509

simple sans-serif fonts things that and

528

00:23:59,029 --> 00:23:56,580

also the default when you start typing

529

00:24:02,029 --> 00:23:59,039

is not a bold font i virtually bold

530

00:24:04,860 --> 00:24:02,039

everything so readability is really

531

00:24:13,080 --> 00:24:10,080

okay how to make sure people who are

532

00:24:16,169 --> 00:24:13,090

colorblind can still read your different

533

00:24:16,799 --> 00:24:16,179

types of colors oh that's a good

534

00:24:18,870 --> 00:24:16,809

question

535

00:24:20,789 --> 00:24:18,880

so you can go on the web and there are

536

00:24:22,200 --> 00:24:20,799

tests that show the graphics for

537

00:24:25,409 --> 00:24:22,210

colorblindness and so it would be like a

538

00:24:27,269 --> 00:24:25,419

pale pink over a pale green where most

539

00:24:29,130 --> 00:24:27,279

people don't have it so you would avoid

540

00:24:31,560 --> 00:24:29,140

those spectrums so you could find those

541

00:24:33,990 --> 00:24:31,570

little graphics on the web and then keep

542

00:24:36,810 --> 00:24:34,000

them on your monitor also Photoshop has

543

00:24:42,029 --> 00:24:36,820

a number of settings that you can test

544

00:24:43,289 --> 00:24:42,039

for various types of colorblindness yeah

545

00:24:47,970 --> 00:24:43,299

it's an it's in one of the view modes

546

00:24:51,870 --> 00:24:47,980

guys but generally avoid the pale pinks

547

00:24:54,000 --> 00:24:51,880

and the pale greens we have time if

548

00:24:58,560 --> 00:24:54,010

there's any other questions all right

549

00:24:59,909 --> 00:24:58,570

Graham yeah thanks for that very much I

550

00:25:01,889 --> 00:24:59,919

had a class in my undergrad where we

551
00:25:03,539 --> 00:25:01,899
talked about making presentations and I

552
00:25:05,820 --> 00:25:03,549
took it to heart years ago and I stick

553
00:25:09,000 --> 00:25:05,830
by it trying to to use ways to maximize

554
00:25:10,860 --> 00:25:09,010
my impact in my talks well not you know

555
00:25:12,690 --> 00:25:10,870
being too much of a burden for the

556
00:25:16,289 --> 00:25:12,700
audience to try to read through text and

557
00:25:18,269 --> 00:25:16,299
have a hard time but even with the best

558
00:25:20,370 --> 00:25:18,279
presentation the best slides on the

559
00:25:23,279 --> 00:25:20,380
planet if the presenter can't actually

560
00:25:25,919 --> 00:25:23,289
present it well it won't matter and so

561
00:25:28,440 --> 00:25:25,929
one of my biggest pet peeves I have at

562
00:25:30,210 --> 00:25:28,450
conferences and anything I go to is when

563
00:25:32,549 --> 00:25:30,220

the presenter kind of stares at the

564

00:25:34,049 --> 00:25:32,559

slide the whole time and the audience

565

00:25:35,190 --> 00:25:34,059

might be over here doing something I

566

00:25:36,840 --> 00:25:35,200

don't really know because I'm not

567

00:25:38,010 --> 00:25:36,850

watching them right now my slide says

568

00:25:41,250 --> 00:25:38,020

some words so I'll read those words

569

00:25:43,590 --> 00:25:41,260

exactly I really don't like when people

570

00:25:45,060 --> 00:25:43,600

do that and I'm not sure what the best

571

00:25:46,980 --> 00:25:45,070

way is to fix that kind of behavior

572

00:25:48,690 --> 00:25:46,990

because even a great presentation won't

573

00:25:51,570 --> 00:25:48,700

do that right and so I'm wondering what

574

00:25:54,380 --> 00:25:51,580

your practice and so people do that when

575

00:25:56,990 --> 00:25:54,390

they're nervous and when you're starting

576

00:26:00,779 --> 00:25:57,000

do not feel bad about being nervous

577

00:26:03,720 --> 00:26:00,789

don't apologize for that we've all been

578

00:26:06,450 --> 00:26:03,730

in your position and remember that right

579

00:26:09,000 --> 00:26:06,460

even the most famous scientists in the

580

00:26:10,440 --> 00:26:09,010

front row was once a stupid

581

00:26:13,500 --> 00:26:10,450

undergraduate didn't know what the heck

582

00:26:15,270 --> 00:26:13,510

they were doing okay no it's true and so

583

00:26:17,800 --> 00:26:15,280

don't apologize for that and it comes

584

00:26:19,480 --> 00:26:17,810

with practice so as you get more

585

00:26:21,490 --> 00:26:19,490

just you realize like you said your

586

00:26:24,760 --> 00:26:21,500

audience is out there you should refer

587

00:26:27,520 --> 00:26:24,770

to things you're scared to death of

588

00:26:29,710 --> 00:26:27,530

worrying about not remembering what

589

00:26:31,930 --> 00:26:29,720

you're supposed to say right and I hate

590

00:26:34,030 --> 00:26:31,940

to say it but I hate note cards you know

591

00:26:35,320 --> 00:26:34,040

people use those maybe to practice in

592

00:26:38,230 --> 00:26:35,330

front of your roommate or something is

593

00:26:41,650 --> 00:26:38,240

okay but but don't use note cards in a

594

00:26:43,540 --> 00:26:41,660

in a in a talk because if you lose the

595

00:26:45,460 --> 00:26:43,550

note cards or you lose your place

596

00:26:48,340 --> 00:26:45,470

in 12 minutes it's all gonna

597

00:26:50,590 --> 00:26:48,350

self-destruct so it just takes practice

598

00:26:54,400 --> 00:26:50,600

and don't feel bad for being nervous we

599

00:26:56,230 --> 00:26:54,410

if someone if it's not often times

600

00:26:58,630 --> 00:26:56,240

you're nervous about you know some

601
00:27:00,790 --> 00:26:58,640
senior person out there right that CEO

602
00:27:02,740 --> 00:27:00,800
might hammer you and something that what

603
00:27:05,050 --> 00:27:02,750
I tell my students is if some senior

604
00:27:08,830 --> 00:27:05,060
person hammers you for something and

605
00:27:11,320 --> 00:27:08,840
you're a student bad on them right okay

606
00:27:12,430 --> 00:27:11,330
if you screwed up the science hopefully

607
00:27:14,170 --> 00:27:12,440
you're not doing that because that's

608
00:27:16,510 --> 00:27:14,180
between you and your advisor before you

609
00:27:18,370 --> 00:27:16,520
get to the meeting so if that's put

610
00:27:20,500 --> 00:27:18,380
aside and taken care of so that's not

611
00:27:22,900 --> 00:27:20,510
screwed up then if the presentation is

612
00:27:25,390 --> 00:27:22,910
just nervous well I think it reflects

613
00:27:27,010 --> 00:27:25,400

badly on the person that might be going

614

00:27:29,920 --> 00:27:27,020

after the students students should be

615

00:27:32,260 --> 00:27:29,930

off-limits to most of us in terms of

616

00:27:34,240 --> 00:27:32,270

going after you for that because we all

617

00:27:37,710 --> 00:27:34,250

know that it takes time to get

618

00:27:44,580 --> 00:27:37,720

comfortable that's wonderful thank you I

619

00:27:48,040 --> 00:27:44,590

already have a mic I guess a question

620

00:27:49,600 --> 00:27:48,050

regarding people being nervous a hint

621

00:27:52,240 --> 00:27:49,610

that I was told that actually helped me

622

00:27:54,010 --> 00:27:52,250

quite a bit was that when we were first

623

00:27:55,540 --> 00:27:54,020

starting out your your impetus is just

624

00:27:56,910 --> 00:27:55,550

to memorize the script for the whole

625

00:28:00,040 --> 00:27:56,920

thing which is terrible you give really

626

00:28:03,760 --> 00:28:00,050

horribly unnatural sounding talks but if

627

00:28:05,530 --> 00:28:03,770

you memorize the first 30 seconds then

628

00:28:06,790 --> 00:28:05,540

you're not nervous because you know

629

00:28:08,860 --> 00:28:06,800

exactly what you're gonna say and pass

630

00:28:10,450 --> 00:28:08,870

that you seem to get into the flow of it

631

00:28:11,500 --> 00:28:10,460

and you're talking more naturally and I

632

00:28:15,310 --> 00:28:11,510

was wondering whether or not you think

633

00:28:17,200 --> 00:28:15,320

this is a good technique or it's

634

00:28:19,780 --> 00:28:17,210

beginning that's the hardest and once

635

00:28:22,900 --> 00:28:19,790

you get in the flow chances are then

636

00:28:24,520 --> 00:28:22,910

then your own enthusiasm for why you're

637

00:28:26,560 --> 00:28:24,530

doing this in the first place will come

638

00:28:28,120 --> 00:28:26,570

out don't feel bad about being

639

00:28:29,890 --> 00:28:28,130

enthusiastic everyone loves to say

640

00:28:30,610 --> 00:28:29,900

someone and I just got these data asking

641

00:28:33,220 --> 00:28:30,620

you you know

642

00:28:35,980 --> 00:28:33,230

they're really cool what's gonna not

643

00:28:37,690 --> 00:28:35,990

want to hear that so don't don't feel so

644

00:28:40,480 --> 00:28:37,700

stilted that you can't let that come

645

00:28:44,529 --> 00:28:40,490

through this hardest part is starting

646

00:28:46,240 --> 00:28:44,539

yeah I would add to that that I think

647

00:28:48,580 --> 00:28:46,250

it's more important to remember the key

648

00:28:50,620 --> 00:28:48,590

points you want to get across on a slide

649

00:28:52,299 --> 00:28:50,630

and just remember that like you can

650

00:28:53,500 --> 00:28:52,309

share it in different ways you can say

651
00:28:56,049 --> 00:28:53,510
it in different ways but if you remember

652
00:28:57,460 --> 00:28:56,059
the key point of the slide why it's in

653
00:28:59,769 --> 00:28:57,470
there and what the message is I think

654
00:29:02,919 --> 00:28:59,779
that's more important than remembering

655
00:29:05,080 --> 00:29:02,929
exactly how you want to explain it and I

656
00:29:07,330 --> 00:29:05,090
have AK one more question which is what

657
00:29:10,149 --> 00:29:07,340
is your feeling on titles on slides

658
00:29:11,760 --> 00:29:10,159
because I know I'm i did the geobiology

659
00:29:14,320 --> 00:29:11,770
summer school and Frank Crosetti

660
00:29:15,220 --> 00:29:14,330
strongly does not believe in titles if

661
00:29:17,350 --> 00:29:15,230
he doesn't think they're absolutely

662
00:29:20,289 --> 00:29:17,360
necessary he thinks there's a there

663
00:29:22,060 --> 00:29:20,299

waste of space in some cases and I have

664

00:29:35,260 --> 00:29:22,070

mixed feelings about that depending on

665

00:29:37,149 --> 00:29:35,270

what kind of slide it is the main points

666

00:29:39,279 --> 00:29:37,159

I'm a big fan of stepping through these

667

00:29:41,320 --> 00:29:39,289

little boxes because they help jog your

668

00:29:43,450 --> 00:29:41,330

memory if you're worrying about it about

669

00:29:46,659 --> 00:29:43,460

remembering it and it actually shows

670

00:29:56,139 --> 00:29:46,669

someone the points but don't read them

671

00:29:58,870 --> 00:29:56,149

verbatim facing the screen yeah okay as

672

00:30:01,360 --> 00:29:58,880

far as titles go some another piece of

673

00:30:03,490 --> 00:30:01,370

advice I got which run past you is that

674

00:30:04,870 --> 00:30:03,500

always be careful about the top and the

675

00:30:07,690 --> 00:30:04,880

bottom of your slides because it can get

676

00:30:09,700 --> 00:30:07,700

cut off on projectors but that makes it

677

00:30:11,889 --> 00:30:09,710

the perfect place to put a thin sliver

678

00:30:13,990 --> 00:30:11,899

for a title and at the bottom you can

679

00:30:15,430 --> 00:30:14,000

have your slide number or references or

680

00:30:17,019 --> 00:30:15,440

the things that is not the end of the

681

00:30:18,159 --> 00:30:17,029

world if you get cut off but it's not

682

00:30:21,010 --> 00:30:18,169

taking up the space that you wouldn't

683

00:30:22,720 --> 00:30:21,020

use anyways I do that I don't know if

684

00:30:24,370 --> 00:30:22,730

it's a good idea or a bad idea but it

685

00:30:27,700 --> 00:30:24,380

gives you a place for a title at the

686

00:30:29,560 --> 00:30:27,710

very least it is true that sometimes you

687

00:30:32,889 --> 00:30:29,570

know when you resync with a different

688

00:30:34,899 --> 00:30:32,899

you know footprint of your monitor

689

00:30:37,360 --> 00:30:34,909

versus your screen you can cut stuff off

690

00:30:39,159 --> 00:30:37,370

so I would not go too close although

691

00:30:41,110 --> 00:30:39,169

this one violates that oh no it's a

692

00:30:42,220 --> 00:30:41,120

mother right there but it violates it on

693

00:30:46,030 --> 00:30:42,230

the left and

694

00:30:48,490 --> 00:30:46,040

right what about a slight number of or

695

00:30:49,840 --> 00:30:48,500

progression markers for example for

696

00:30:52,180 --> 00:30:49,850

conferences we have multiple sessions

697

00:30:53,830 --> 00:30:52,190

and people come in out of rooms and

698

00:30:55,270 --> 00:30:53,840

someone is in the middle to talk you

699

00:30:57,909 --> 00:30:55,280

cannot want to know you know who that is

700

00:30:58,990 --> 00:30:57,919

how far they so you know what to do when

701

00:31:01,570 --> 00:30:59,000

catching up in there

702

00:31:03,760 --> 00:31:01,580

I find that distracting if the if the

703

00:31:07,919 --> 00:31:03,770

audience can't get to your talk on time

704

00:31:11,760 --> 00:31:07,929

then that's not your problem seriously